

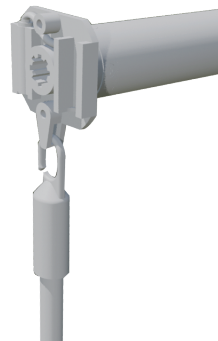


25mm Switch Control Wand Motor

1.1Nm

FEATURES

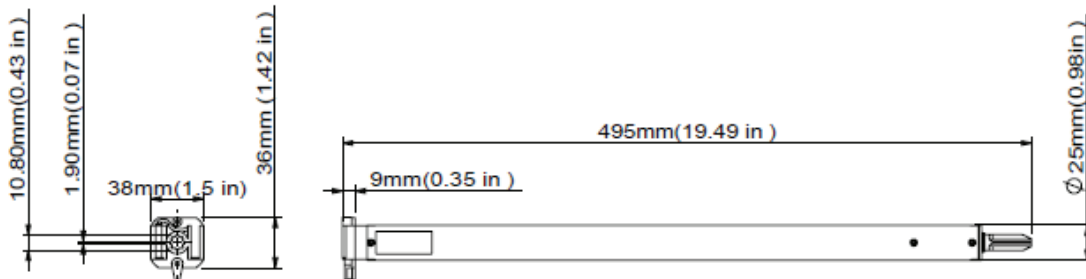
- Electronic limit
- Switch direction
- Speed regulation
- Reset to Factory Mode
- USB-C charging port
- Preferred Stop Position



Switch Wand
Type-C Charging



DIMENSIONS



TECHNICAL SPECS

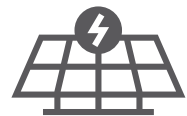
Rated Torque(Nm)	1.1
Rated Speed (Rpm)	28-24-20
Li-ion Battery (mAh)	2600
Rated Power (W)	7

Degree of Protection	IP20
Maximum Limit Turn(turn)	∞
Max.Single Running Time (min.)	6
Working Temperature (°C)	0-40 C°
Charging Input	5V DC 1A/2A

CHARGING OPTIONS

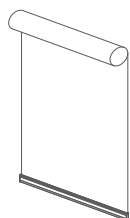


USB-C POWER CABLE

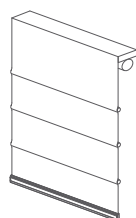


USB-C SOLAR PANEL

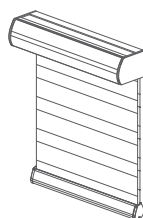
APPLICATIONS



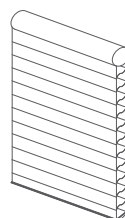
ROLLER
SHADES



ROMAN
SHADES

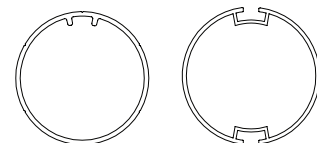


ZHEER
ELEGANCE



SAINT-
TROPEZ

COMPATIBLE TUBES



1.5" tube