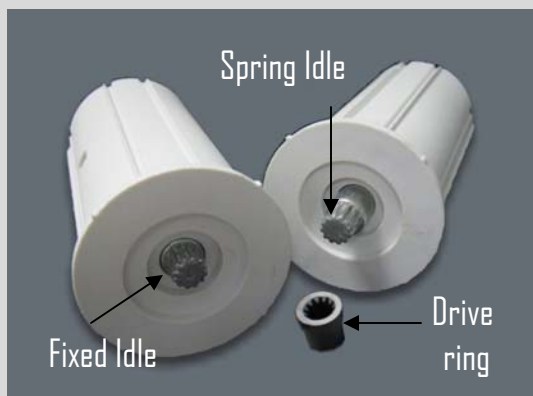
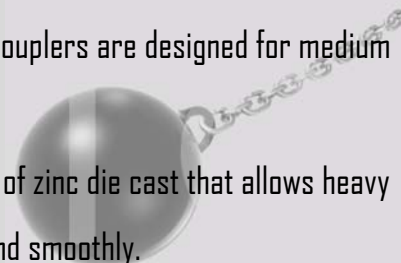


➤➤ 10' Multi-Band Shades using 2" Clutch and Spring Assist

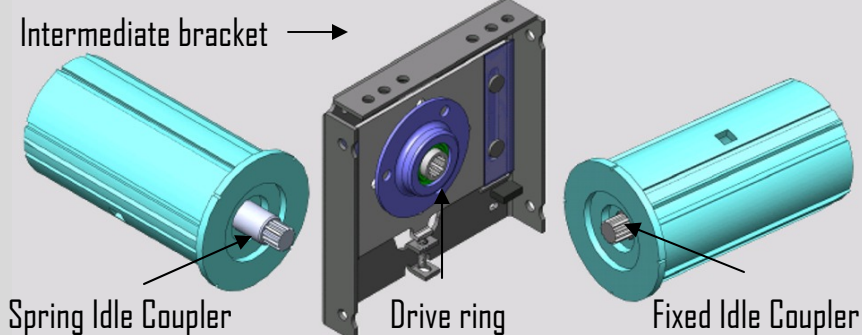
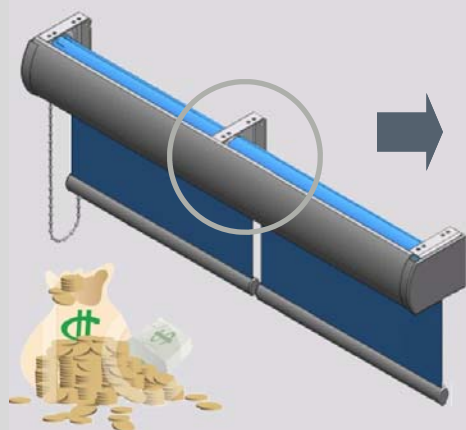


SMOOTH AND HEAVY DUTY

- Rated up to 15 Newton Meter these couplers are designed for medium weight multi-band shades.
- The pin idle and drive ring are made of zinc die cast that allows heavy multi-band shades to work quietly and smoothly.



COST EFFECTIVE OPTION FOR MULTI-BAND SHADES



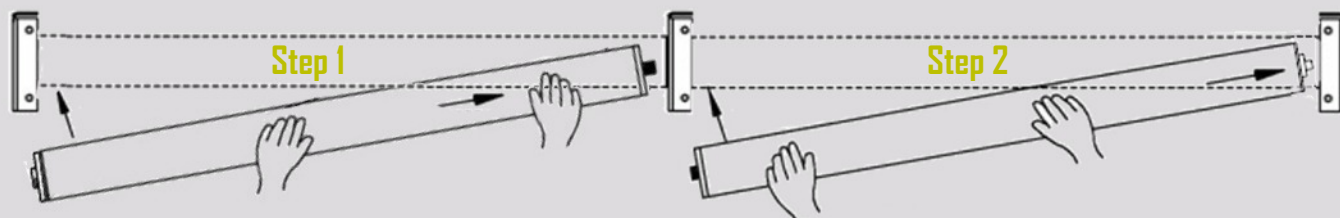
Note .- Replace "Intermediate bracket" plastic drive ring with "Metal drive ring".

FUNCTIONAL AND EASY TO INSTALL

Clutch Side Bracket

Intermediate Bracket

Idle End Bracket



Step 1 Insert the "Metal Spindle Coupler" (spring idle side), then slide the clutch into the "Clutch Side Bracket".

Step 2 Insert the Idle End into Idle End Bracket and then snap on the "Metal Spindle Coupler" (fixed idle side).



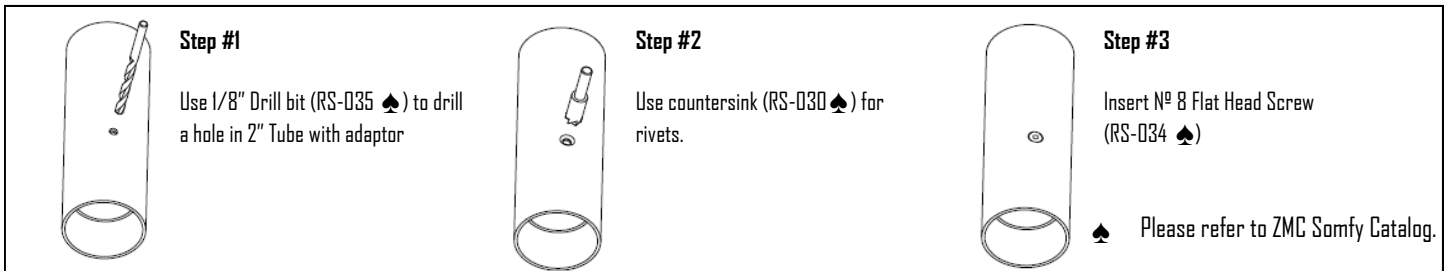
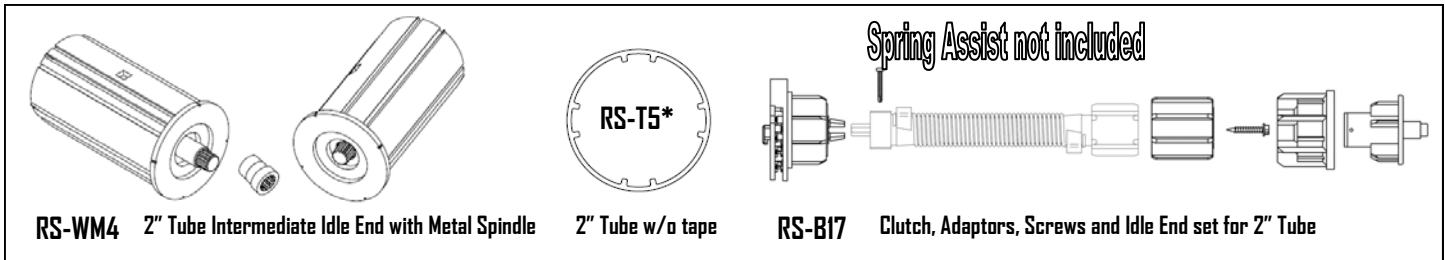
For easy installation please note direction of Intermediate Bracket. When using Metal Spindle Application make sure "soft side" of Intermediate Bracket faces "clutch side bracket"

For more information please contact us at:

Tel: 1.905.856.3838 or 1.800.541.2557
1.770.682.4548 (U.S. office)

Website: www.zmc.ca
E-mail: contact@zmc.ca

10' Multi-Band Shades using 2" Clutch and Spring Assist



BRACKETS AVAILABLE

IDLE END BRACKET	INTERMEDIATE BRACKET	CLUTCH BRACKET
<p>RS-LKA 4" Adjustable Fascia Bracket (Idle End)</p>	<p>RS-WDA 4" Adjustable Intermediate Fascia Bracket</p>	<p>RS-LKA 4" Fascia Bracket (Clutch Side)</p>
<p><i>Plastic Adaptor (RS-D91) must be inserted on the idle end.</i></p>	<p>RS-B21 Motor Bracket set for Metal Spindle</p> <p>NEW</p>	<p>RS-B11 Clutch Side Bracket for 2³/₈ tube</p> <p>NEW</p>
<p>RS-W11 7" Adjustable Fascia Bracket (Idle Side)</p>	<p>RS-B41 7" Adjustable Intermediate Fascia Bracket</p> <p>NEW</p>	<p>RS-WT1 + RS-WZ9 7" Fascia Bracket + Insert Plate for 1-3/4"</p>

◆ AVAILABLE IN A VARIETY OF COLORS. PLEASE ASK OUR CUSTOMER SERVICE REPRESENTATIVES FOR MORE INFORMATION