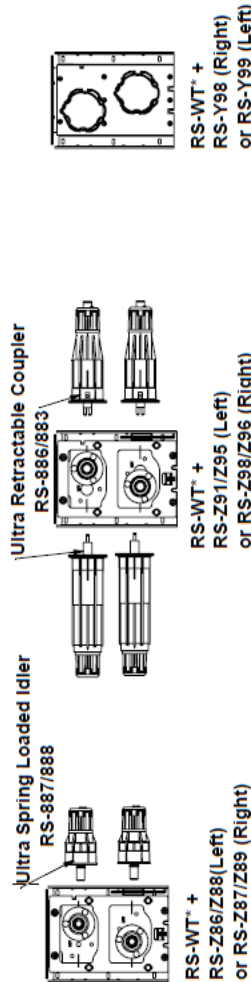
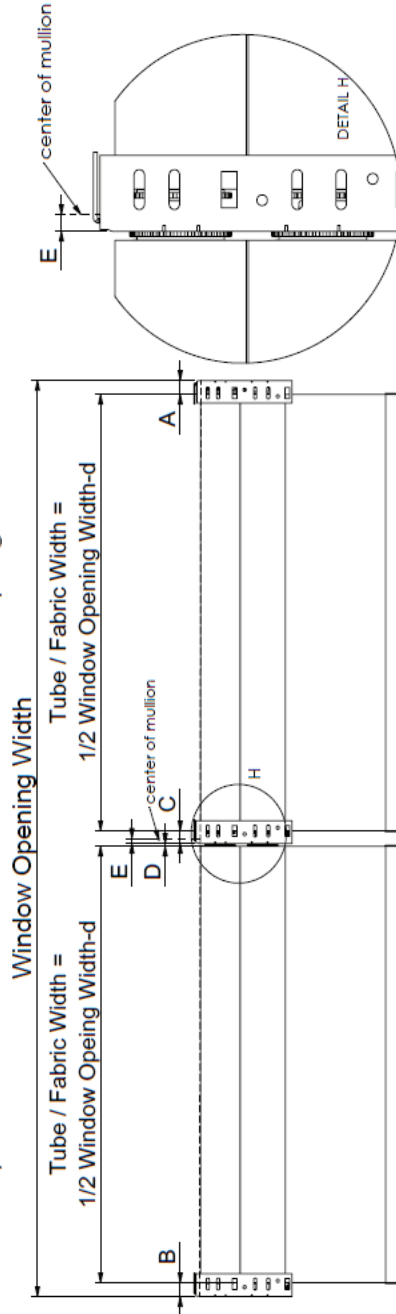


7" Duo Fascia System Tube And Fabric Deduction (W/O End Cap)

For Somfy Sonesse 50AC Star Head Motor and Ultra Spring Loaded Idler and Ultra Retractable Coupler



Tube	Crown	Unit	Light Gap				Deduction	Intern. Bracket off center of mullion
			A	B	C	D		
RS-013 2" Groove Tube		in	1.00	1.00	0.91	0.20	1.55	$E=1/2(C-D+A-B)$ 0.36
		mm	25.4	25.4	23.1	5.0	39.5	9.1
RS-033 2 3/8" Tube	RS-975	in	1.06	1.06	0.97	0.26	2.03	0.36
		mm	26.9	26.9	24.6	6.5	42.5	9.1
RS-T66 2 1/2" Tube	RS-984	in	1.09	1.09	1.00	0.29	2.10	0.36
		mm	27.8	27.8	25.5	7.4	53.3	9.1

- Note: 1. Use this chart as a guideline only.
2. Deduction with 1-2mm tolerance.
3. End cap thickness 1.6mm.