

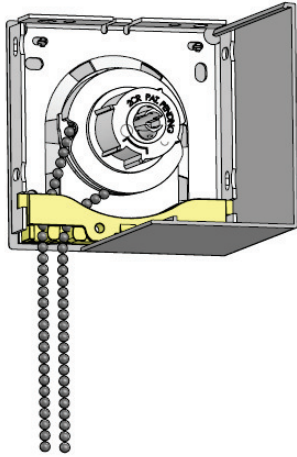
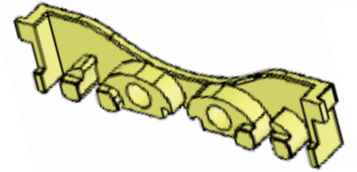
# 3" & 4" RS Fascia Bracket

**NEW**

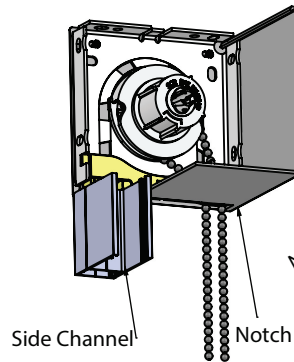
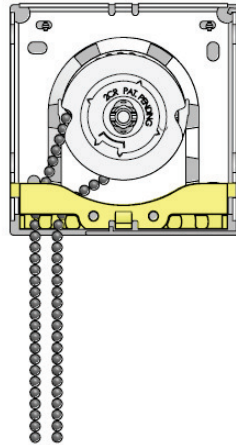
## Chain Guide

Chain Can Be Guided to the Front or Back

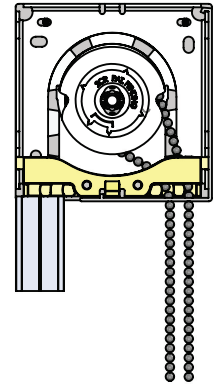
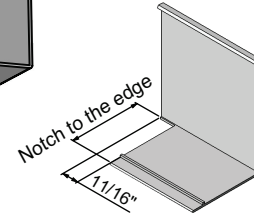
Easy to pull the Shade Up, Quieter Operation



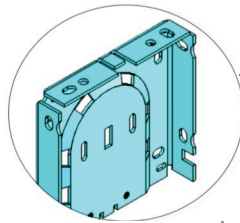
Normal Fascia  
 No Notch Needed



With Side Channel  
 Chain Can Be Guided To The Front

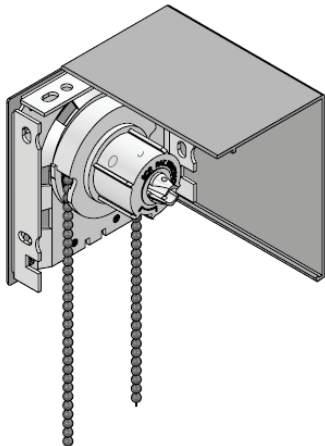


## Flipped Fascia

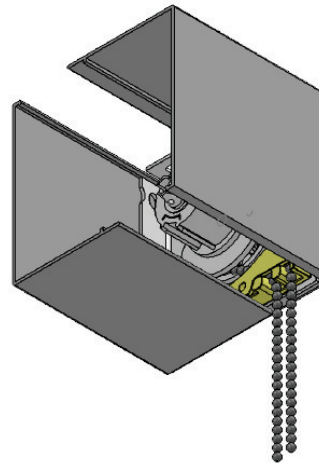
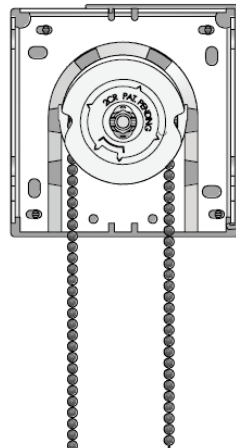


The Two Slots Enable Fascia for Flip Installation

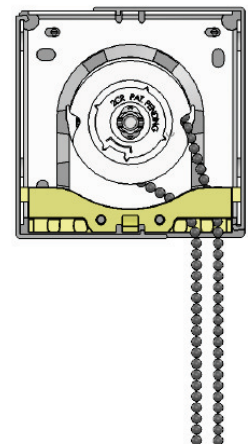
**NEW**



Front -Flipped Fascia  
 No Chain Guide Needed



Back/Front Fascia



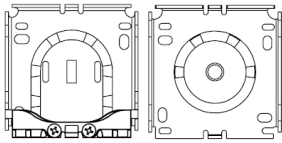
Website: [www.zmc.ca](http://www.zmc.ca)  
 E-mail: [contact@zmc.ca](mailto:contact@zmc.ca)



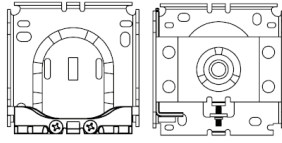
For more information please contact us at:  
 Tel: 1.905.856.3838 or 1.800.541.2557

# 3" & 4" RS Fascia Bracket

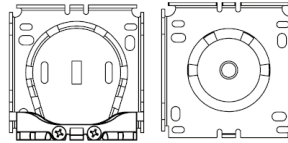
## 3" RS Fascia Bracket



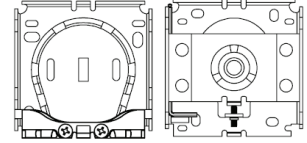
RS-UA1~5  
3" Fascia Bracket  
for 1 1/4" RS Clutch



RS-UHA~E  
3" Adj. Fascia Bracket  
for 1 1/4" RS Clutch

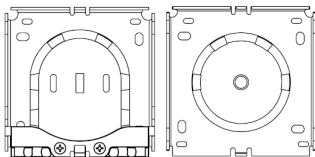


RS-UB1~5  
3" Fascia Bracket  
for 1 1/2" RS Clutch

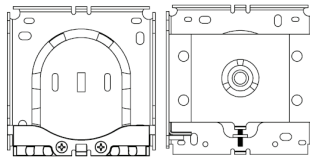


RS-UIA~E  
3" Adj. Fascia Bracket  
for 1 1/2" RS Clutch

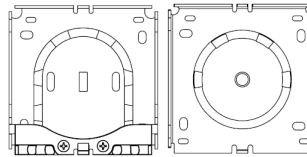
## 4" RS Fascia Bracket



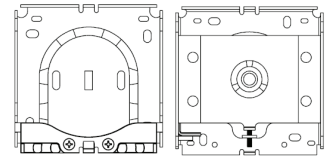
RS-UC1~5  
4" Fascia Bracket  
for 1 1/2" RS Clutch



RS-UJA~E  
4" Adj. Fascia Bracket  
for 1 1/2" RS Clutch



RS-UD1~5  
4" Fascia Bracket  
for 1 3/4" RS Clutch



RS-UKA~E  
4" Adj. Fascia Bracket  
for 1 3/4" RS Clutch

## RS Clutch

### Smooth Heavy Duty Clutch



RM-1CR 1 1/4" Clutch  
(1 1/4" T3 Tube)  
RM-1CX 1 1/4" Clutch  
(1 1/4" 1TU Tube)

RM-2CR 1 1/2" Clutch  
(1 1/2" T4 Tube)  
RM-2CX 1 1/2" Clutch  
(1 1/2" 2TU Tube)

RM-3CR 2" Clutch  
(2" T5 Tube)  
RM-3CX 1 3/4" Clutch  
(1 3/4" 3TU Tube)

### CL Series Clutch



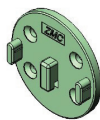
RM-220 1 1/4" Clutch  
(1 1/4" 1TU Tube)

RM-221 1 1/2" Clutch  
RM-223(Black)  
(1 1/2" 2TU Tube)

RM-222 1 3/4" Clutch  
RM-224(Black)  
(1 3/4" 3TU Tube)

## Motor Adaptor

### 30 & 40 Motor

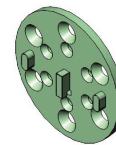


RS-B58 (White)  
RS-B60 (Black)  
(1 1/2" clutch Bracket)



RS-B51 (Metal)  
(1 1/2" clutch Bracket)

### 30, 40 & 50 Motor



RS-B66  
(1 3/4" clutch Bracket)



Website: [www.zmc.ca](http://www.zmc.ca)  
E-mail: [contact@zmc.ca](mailto:contact@zmc.ca)



For more information please contact us at:  
Tel: 1.905.856.3838 or 1.800.541.2557