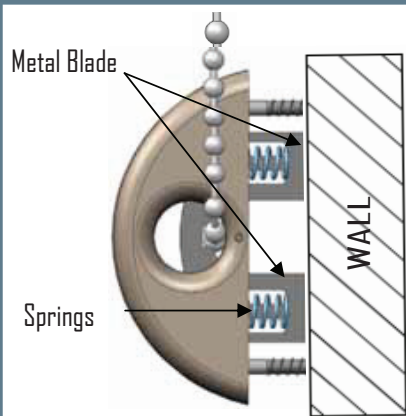
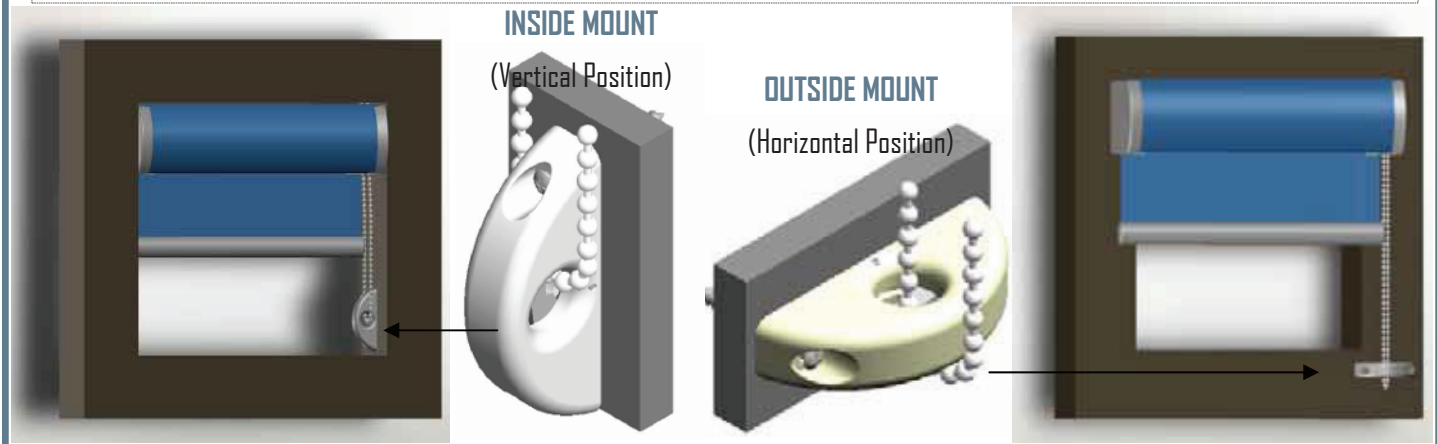




# Universal Locking Tensioner (ULT)



The main advantage of the Universal Locking Tensioner is that it can be used for both **inside** and **outside** mount; keeps the ball chain or cord parallel and prevents them from crossing.



## CHAIN INOPERABLE IF SCREWS ARE LOOSE

Complies with both ANSI/WCMA A100.1-2012 and CSA Z600-14 safety standard.

**SAFETY FIRST**

ZMC's Universal Locking Tensioner has two springs inside that will push a metal blade out to **render the shade inoperable** if it is **partially loose** from the wall.

This preventive measure will force the homeowner to take action before it becomes a *safety hazard* for young children.



**OPTIONS AVAILABLE**

### ULT FOR CHAIN WITH CONNECTOR

This ULT has been designed to allow the chain connector and stopper to pass through easily. It is not intended to be used with cord or endless ball chain.



### ULT FOR ENDLESS LOOP CHAIN

This ULT has the added advantage of a push-in plug to secure the endless loop chain in place. Should you require changing the endless loop chain after installation simply remove the push-in plug using a precision screwdriver.

### MINI ULT FOR ENDLESS CORD

This sleek and smaller version of the ULT has been specifically designed for endless loop cord. The metal blade inside has sharp teeth which will lock the cord when screws become loose.

**COLORS AVAILABLE**

White

Alabaster

Anodized

Bronze

Black

For more information please contact us at:

**Tel: 1.905.856.3838 or 1.800.541.2557**  
**1.770.682.4548 (U.S. office)**

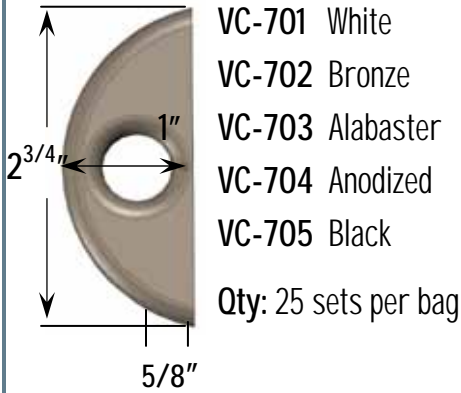
**Website: [www.zmc.ca](http://www.zmc.ca)**  
**E-mail: [contact@zmc.ca](mailto:contact@zmc.ca)**

For more information see reverse page.



# Universal Locking Tensioner (ULT)

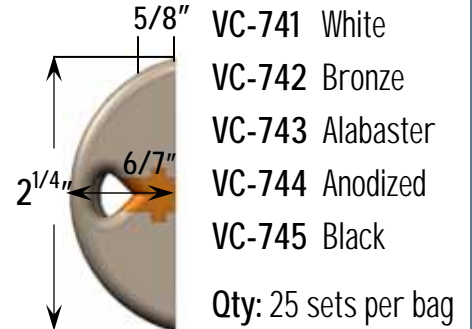
## FOR CHAIN WITH CONNECTOR



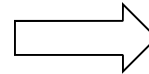
## FOR ENDLESS LOOP CHAIN



## FOR ENDLESS LOOP CORD

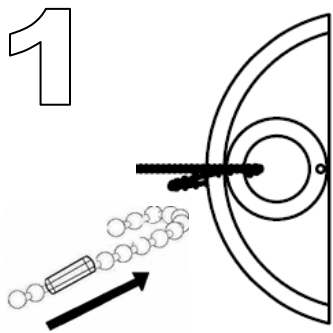


Each tensioner comes with a warning label for safety purposes.

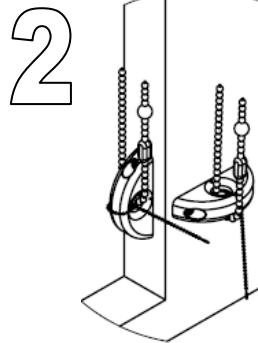


INSTALLATION INSTRUCTIONS

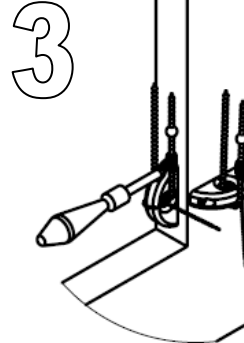
## ULT for chain with connector



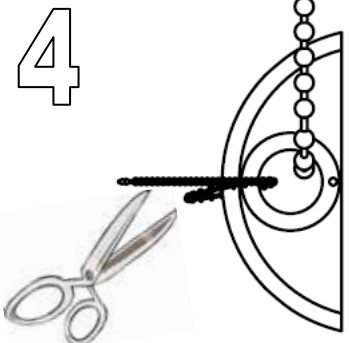
1 Insert bead chain into the hole then position tensioner vertically (for inside mount) or horizontally (for outside mount).



2 Place tensioner on the wall where the bead chain can be taut but allow the connector or stopper to go through smoothly

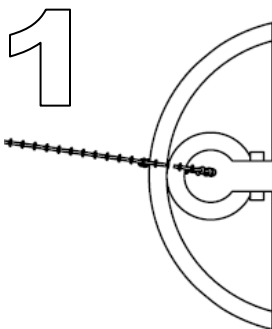


3 Tighten both screws

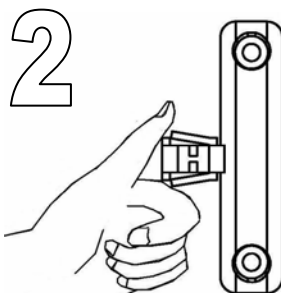


4 Cut off the cable and dispose it properly.

## ULT for endless chain or endless cord



1 Slide Endless Chain or cord in.



2 Insert "plug" into shell to close the gap. Make sure it fully snaps in. Position tensioner onto the wall then follow steps 3 and 4 as above.

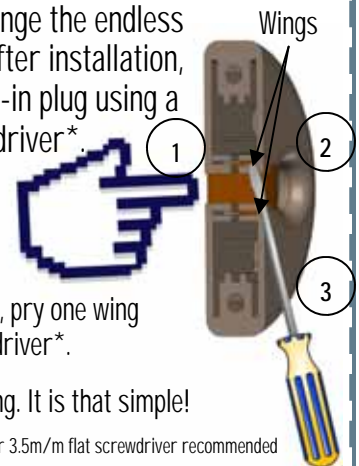
## How to remove push-in plug

If you require to change the endless loop chain or cord after installation, simply remove push-in plug using a precision screwdriver\*.

1. Slightly push the plug with your finger.

2. While pushing the plug, pry one wing using a precision screwdriver\*.

3. Then pry the other wing. It is that simple!



\*3.0m/m or 3.5m/m flat screwdriver recommended