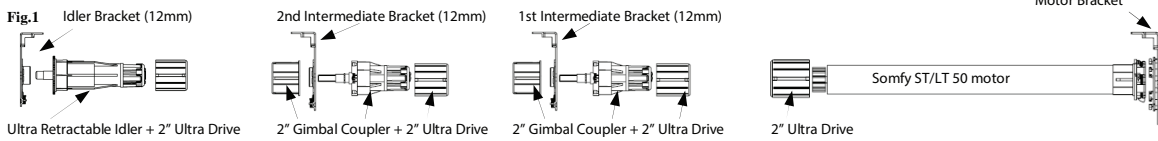
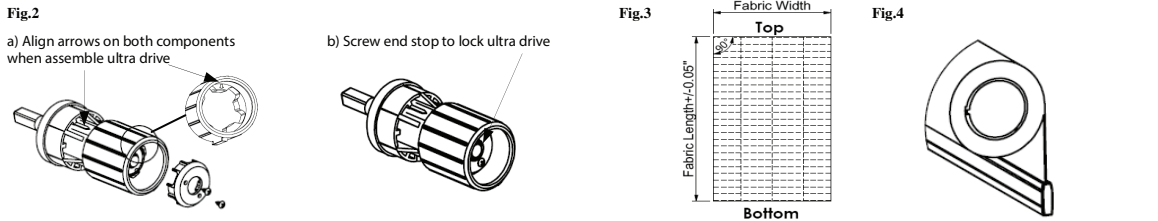


INSTALLATION INSTRUCTION FOR USING 2" GIMBAL COUPLER RS-UZM & ULTRA RETRACTABLE IDLER WITH BAY WINDOW

1. Prepare all the components for bay window shades (Fig.1):

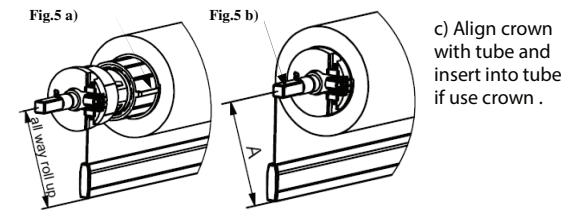


- 1) Assemble 2" Ultra Drives with Gimbal Coupler Idler (Fig. 2);
- 2) Cut fabric perfectly with right angles (90°), and fabric length of shades should be the same (Fig.3);
- 3) Attach fabric with bottom bar to tube along step, roll fabric all the way up (Fig. 4);



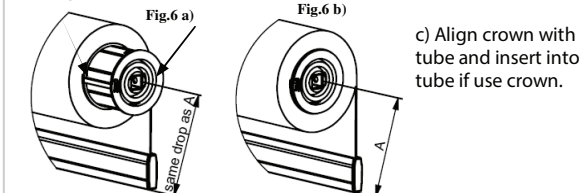
4) Insert Square Shaft Idler into 1st shade (motor) tube left side, refer to Fig. 5 a), b) & c).
The same operation applies to 2nd shade left side.

- a) Align the key on drive with groove on tube and slide into tube.
- b) Keep the square shaft surface horizontally.



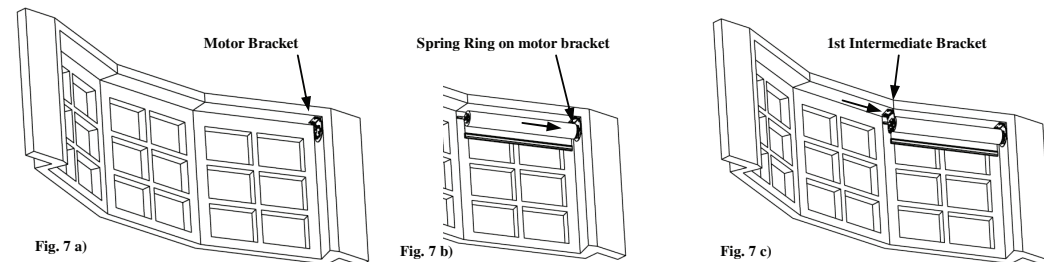
5) Insert 2" Gimbal part into 2nd shade tube right side, refer to Fig.6 a), b) & c).
The same operation applies to 3rd shade right side.

- a) Open 2nd shade to have same fabric drop length as 1st shade.
- b) Align the key on 2" Gimbal with groove on tube and insert it into tube right side.



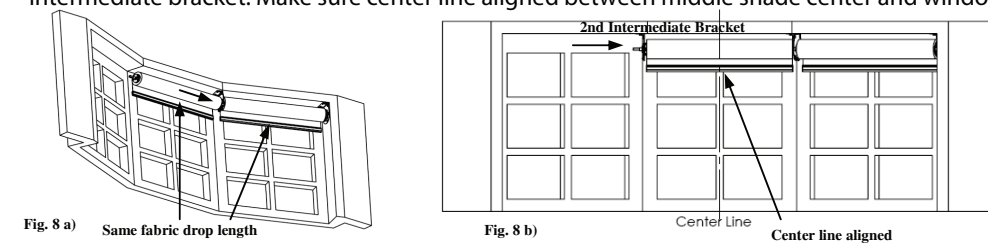
2. Install motor side shade, refer to Fig. 7 a), b) & c).

- a) Attach motor bracket to the ceiling, wall, window frame or molding.
- b) Insert motor end into the motor bracket, and make sure it is locked by spring ring.
- c) Slide 1st intermediate bracket into square shaft until it stopped by the shaft shoulder, then fasten 1st intermediate bracket.



3. Install middle shade, refer to Fig. 8 a) & b).

- a) 2" Gimbal part with square hole connect to the square shaft. Make sure two shades have the same fabric drop length.
- b) Slide 2nd intermediate bracket into square shaft until it stopped by the shaft shoulder, then fasten intermediate bracket. Make sure center line aligned between middle shade center and window frame center.



INSTALLATION INSTRUCTION FOR USING 2" GIMBAL COUPLER RS-UZM & ULTRA RETRACTABLE IDLER WITH BAY WINDOW

4. Install idle end side shade, refer to Fig. 9 a) & b).

- a) Install Idler Bracket.
- b) Retract Idler shaft completely and slide 2" Gimbal square hole onto square shaft until stopped by shaft shoulder. Make sure two adjacent shades have the same fabric drop lengths.
- c) Release Idler shaft into Idler Bracket bearing, make sure the shaft is fully extended.

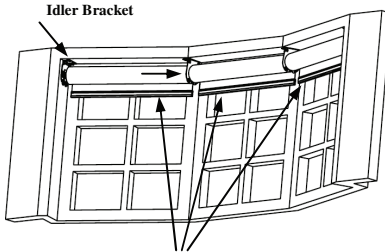


Fig. 9 a) Same fabric drop lengths

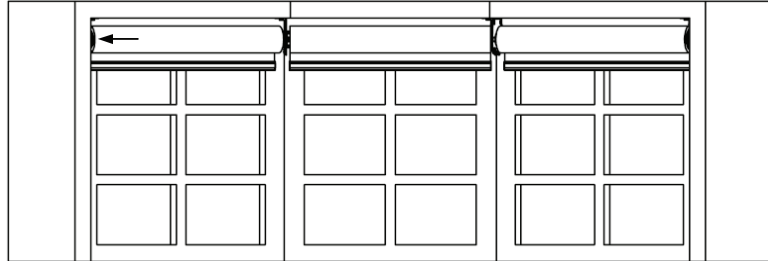


Fig. 9 b)

5. Fully drop shades to check their bottom bars (Fig. 10).

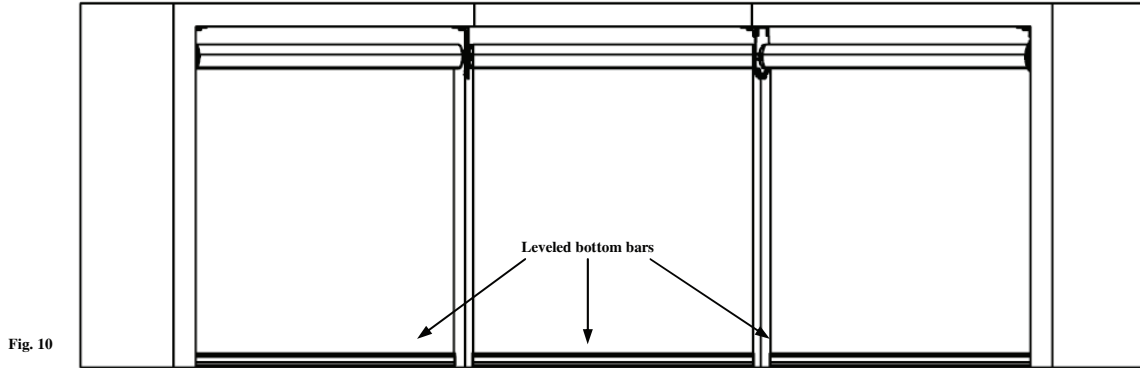
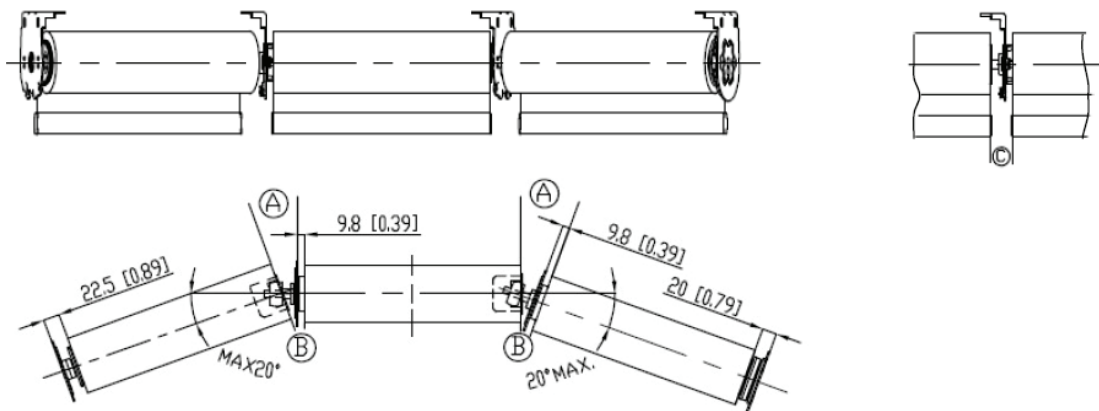


Fig. 10

Note: If bottom bars are not leveled, please refer to the page of How to Use EZ-Adjustable/Retractable Coupler to Level Bottom Bars.



2" Gimbal Coupler (RS-UZM) (0~20°) Max. torque 30Nm

Note: Edge clearance A & B for angled shades depends on:

- 1) Roller up diameter
- 2) Up and down position of the shade
- 3) Regular roll or reverse roll
- 4) Angle of the window wall

Edge clearance C for non-angled shade is 32mm (1.26").