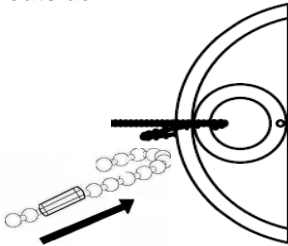


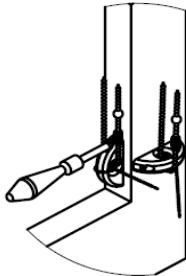
VC-70x Installation Instruction

The device can be outside or inside mount without twisting the chain and it is not intended to be used with cord or endless loop bead chain

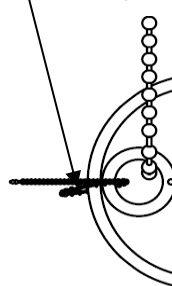
1. Slide bead chain into hole then position tensioner vertically for inside mount or horizontally for outside mount
2. Place tensioner on the spot which can hold the bead loop taut but allow ball stopper go through.



3. Tighten both screws.



4. Cut off the cable tie and dispose it properly.



For wood substrate: Use supplied screw

For dry wall substrate: Use supplied screw and plug

For sheet metal substrate: please use sheet metal screw, Pan Head, Phillips Drive, #6, 1 1/4" long

Warning: If any screw is loose, retighten screw for safety purpose